



**Water Monitoring Result at M5B - Central Cooling Water Intake Group  
Mid-Flood Tide**

Date	Time	Weather Condition	Sampling Depth		Water Temperature			pH			Salinity		DO Saturation		DO		Turbidity		Suspended Solids					
					°C		-		ppt		%		mg/L		NTU		mg/L							
			m	Value	Average	Value	Average	Value	Average	Value	Average	Value	Average	Value	Average	Value	Average	Value	Average					
2/12/16	21:11	Cloudy	Middle	3.5	22.40	22.40	22.35	7.80	7.80	7.82	30.99	30.99	31.01	84.0	83.9	83.5	6.10	6.09	6.05	5.22	5.20	5.21	7	6.00
	21:12		Middle	3.5	22.30	22.30		7.83	7.83		31.02	31.02		83.3	82.6		6.03	5.99		5.19	5.23		5	
5/12/16	11:30	Cloudy	Middle	3.5	23.90	23.90	23.90	8.00	7.99	7.99	31.05	31.05	31.05	78.8	79.6	78.6	5.57	5.62	5.55	4.55	4.57	4.53	5	5.00
	11:31		Middle	3.5	23.90	23.90		7.99	7.99		31.05	31.05		78.4	77.7		5.53	5.49		4.52	4.48		5	
7/12/16	10:55	Fine	Middle	4.0	22.00	22.00	22.00	8.12	8.12	8.12	31.12	31.12	31.13	80.6	82.6	81.9	5.88	6.03	5.98	7.36	7.38	7.37	10	10.00
	10:57		Middle	4.0	22.00	22.00		8.12	8.12		31.13	31.13		83.1	81.4		6.07	5.94		7.35	7.38		10	
9/12/16	11:25	Fine	Middle	3.5	22.30	22.30	22.35	8.11	8.11	8.12	30.95	30.95	30.97	84.0	85.7	84.4	6.10	6.21	6.12	1.91	1.86	1.87	13	<u>14.00</u>
	11:27		Middle	3.5	22.40	22.40		8.12	8.12		30.99	30.99		83.3	84.4		6.05	6.12		1.85	1.84		15	
12/12/16	15:25	Fine	Middle	4.0	22.50	22.50	22.55	8.25	8.25	8.25	31.02	31.02	31.02	90.9	92.4	92.0	6.58	6.69	6.66	5.31	5.26	5.27	19	<u>18.00</u>
	15:27		Middle	4.0	22.60	22.60		8.25	8.25		31.02	31.02		92.3	92.5		6.68	6.69		5.28	5.23		17	
14/12/16	16:50	Fine	Middle	3.5	22.70	22.70	22.80	8.20	8.20	8.20	30.94	30.94	30.93	89.8	90.5	88.9	6.46	6.51	6.40	4.34	4.35	4.32	4	3.00
	16:52		Middle	3.5	22.90	22.90		8.19	8.19		30.92	30.92		87.3	88.1		6.28	6.34		4.35	4.25		2	
17/12/16	8:55	Fine	Middle	3.5	19.70	19.70	19.65	8.31	8.31	8.31	30.77	30.77	30.78	89.4	89.8	89.1	6.83	6.87	6.81	5.03	5.15	5.15	6	5.50
	8:57		Middle	3.5	19.60	19.60		8.31	8.31		30.78	30.78		88.3	88.7		6.75	6.78		5.19	5.23		5	
19/12/16	10:35	Fine	Middle	4.0	21.90	21.90	21.90	8.25	8.25	8.25	30.62	30.62	30.62	90.3	90.3	90.4	6.62	6.62	6.62	8.74	8.80	8.78	8	7.00
	10:37		Middle	4.0	21.90	21.90		8.25	8.25		30.62	30.62		90.2	90.6		6.61	6.64		8.78	8.79		6	
21/12/16	13:35	Cloudy	Middle	3.5	21.80	21.80	21.80	8.24	8.24	8.24	30.70	30.70	30.70	87.6	88.5	88.8	6.43	6.50	6.52	5.85	5.83	5.85	5	5.50
	13:37		Middle	3.5	21.80	21.80		8.24	8.24		30.70	30.70		89.3	89.6		6.56	6.58		5.84	5.86		6	
23/12/16	11:25	Fine	Middle	3.5	21.30	21.30	21.35	8.21	8.21	8.21	30.55	30.55	30.55	92.0	92.2	91.8	6.82	6.83	6.80	5.67	5.69	5.62	4	4.50
	11:27		Middle	3.5	21.40	21.40		8.21	8.21		30.55	30.55		91.9	91.1		6.81	6.75		5.61	5.50		5	
26/12/16	18:57	Cloudy	Middle	3.5	21.60	21.60	21.70	7.70	7.70	7.70	30.12	30.12	30.13	84.2	86.1	84.8	6.20	6.35	6.25	3.47	3.25	3.25	5	5.00
	18:58		Middle	3.5	21.80	21.80		7.69	7.69		30.13	30.13		84.7	84.1		6.24	6.19		3.16	3.12		5	
28/12/16	16:20	Cloudy	Middle	4.0	19.60	19.60	19.50	8.33	8.33	8.34	30.59	30.59	30.59	96.1	95.3	95.3	7.37	7.30	7.31	8.86	8.70	8.62	10	10.50
	16:22		Middle	4.0	19.40	19.40		8.34	8.34		30.59	30.59		94.6	95.2		7.27	7.30		8.54	8.39		11	
30/12/16	16:04	Fine	Middle	3.5	19.70	19.70	19.70	8.39	8.39	8.39	30.65	30.65	30.65	93.2	93.2	93.0	7.11	7.11	7.10	3.05	3.09	3.34	5	5.00
	16:06		Middle	3.5	19.70	19.70		8.39	8.39		30.65	30.65		93.1	92.5		7.10	7.06		3.60	3.61		5	

Remarks:  
Single underline denotes exceedance over Action Level.  
Double underline denotes exceedance over Limit Level.



**Water Monitoring Result at Culvert J - Reference Station  
Mid-Flood Tide**

Date	Time	Weather Condition	Sampling Depth		Water Temperature		pH			Salinity		DO Saturation		DO		Turbidity		Suspended Solids						
					°C		-		ppt		%		mg/L		NTU		mg/L							
			m	Value	Average	Value	Average	Value	Average	Value	Average	Value	Average	Value	Average	Value	Average	Value	Average					
2/12/16	21:15	Cloudy	Middle	3.0	22.40	22.40	22.35	7.99	7.99	7.99	28.60	28.60	28.60	70.7	72.6	71.7	5.20	5.34	5.27	7.80	7.74	7.77	5	4.50
	21:16		Middle	3.0	22.30	22.30		7.98	7.98		28.60	28.60		72.2	71.2		5.31	5.24		7.72	7.82		4	
5/12/16	11:45	Cloudy	Middle	3.0	23.60	23.60	23.65	8.06	8.06	8.06	27.79	27.79	27.79	70.8	71.1	70.7	5.11	5.13	5.11	7.68	7.69	7.72	5	6.00
	11:46		Middle	3.0	23.70	23.70		8.05	8.05		27.79	27.79		70.2	70.7		5.07	5.11		7.73	7.79		7	
7/12/16	10:50	Fine	Middle	4.0	21.80	21.80	21.80	8.08	8.08	8.09	31.05	31.05	31.06	73.7	77.8	77.1	5.40	5.70	5.65	9.20	9.16	9.15	12	12.50
	10:52		Middle	4.0	21.80	21.80		8.09	8.09		31.06	31.06		78.6	78.4		5.76	5.74		9.14	9.11		13	
9/12/16	11:20	Fine	Middle	3.5	22.60	22.60	22.70	8.04	8.04	8.05	30.62	30.62	30.63	80.0	80.4	80.6	5.78	5.81	5.82	9.92	9.93	9.92	8	9.00
	11:22		Middle	3.5	22.80	22.80		8.06	8.06		30.63	30.63		80.6	81.5		5.82	5.88		9.93	9.91		10	
12/12/16	15:20	Fine	Middle	4.0	22.50	22.50	22.50	8.23	8.23	8.24	31.00	31.00	30.97	94.5	93.5	93.1	6.82	6.75	6.71	2.34	2.37	2.31	15	13.50
	15:22		Middle	4.0	22.50	22.50		8.24	8.24		30.93	30.93		92.9	91.5		6.69	6.59		2.37	2.16		12	
14/12/16	16:55	Fine	Middle	3.5	22.20	22.20	22.25	8.20	8.20	8.20	30.91	30.91	30.91	89.2	88.2	88.3	6.48	6.41	6.41	4.13	4.23	4.17	3	3.50
	16:57		Middle	3.5	22.30	22.30		8.20	8.20		30.91	30.91		88.1	87.5		6.40	6.35		4.23	4.07		4	
17/12/16	8:50	Fine	Middle	3.5	19.50	19.50	19.50	8.27	8.27	8.27	29.71	29.71	29.72	85.5	85.9	85.2	6.60	6.63	6.58	6.44	6.48	6.48	10	9.50
	8:52		Middle	3.5	19.50	19.50		8.27	8.27		29.73	29.73		85.0	84.5		6.56	6.52		6.50	6.51		9	
19/12/16	10:30	Fine	Middle	4.0	22.30	22.30	22.35	8.15	8.15	8.15	27.71	27.71	27.71	77.0	77.7	77.2	5.70	5.75	5.71	1.68	1.66	1.67	8	7.50
	10:32		Middle	4.0	22.40	22.40		8.15	8.15		27.71	27.71		77.5	76.7		5.73	5.67		1.66	1.67		7	
21/12/16	13:30	Cloudy	Middle	3.5	21.90	21.90	21.90	8.22	8.22	8.22	30.30	30.30	30.30	85.9	86.4	86.2	6.31	6.34	6.33	4.75	4.72	4.74	5	5.00
	13:32		Middle	3.5	21.90	21.90		8.22	8.22		30.29	30.29		86.2	86.1		6.33	6.32		4.73	4.74		5	
23/12/16	11:20	Fine	Middle	3.5	21.30	21.30	21.35	8.11	8.11	8.11	28.86	28.86	28.86	80.0	80.1	79.8	5.98	5.99	5.97	9.05	9.01	9.01	4	4.00
	11:22		Middle	3.5	21.40	21.40		8.11	8.11		28.86	28.86		79.5	79.6		5.95	5.95		9.00	8.99		4	
26/12/16	19:03	Cloudy	Middle	3.0	21.50	21.85	21.64	7.70	7.70	7.71	27.52	27.52	27.52	71.3	72.5	71.6	6.35	6.46	6.38	6.72	6.84	6.78	6	6.50
	19:04		Middle	3.0	21.60	21.60		7.71	7.71		27.52	27.52		71.9	70.8		6.39	6.30		6.80	6.76		7	
28/12/16	16:15	Cloudy	Middle	3.5	19.10	19.10	19.10	8.34	8.34	8.34	30.13	30.13	30.24	91.6	91.3	91.5	7.07	7.05	7.06	5.83	5.90	5.88	3	4.00
	16:17		Middle	3.5	19.10	19.10		8.34	8.34		30.35	30.35		91.5	91.4		7.07	7.06		5.99	5.80		5	
30/12/16	16:00	Fine	Middle	3.5	19.80	19.80	19.80	8.38	8.38	8.38	30.67	30.67	30.66	93.1	93.0	92.7	7.09	7.08	7.05	3.25	3.07	3.09	5	4.00
	16:02		Middle	3.5	19.80	19.80		8.38	8.38		30.65	30.65		92.5	92.0		7.04	7.00		3.04	3.01		3	



**Water Monitoring Result at M5B - Central Colling Water Intake Group  
Mid-Ebb Tide**

Date	Time	Weather Condition	Sampling Depth		Water Temperature			pH			Salinity			DO Saturation			DO			Turbidity			Suspended Solids	
					°C		-		ppt		%		mg/L		NTU		mg/L							
					Value	Average	Value	Average	Value	Average	Value	Average	Value	Average	Value	Average	Value	Average	Value	Average	Value	Average		
3/12/16	23:10	Cloudy	Middle	3.5	22.30	22.30	22.30	8.09	8.09	8.10	31.17	31.17	31.17	83.3	84.1	82.9	6.08	6.11	6.03	5.03	5.04	5.07	5	4.50
	23:11		Middle	3.5	22.30	22.30		8.11	8.11		31.17	31.17		82.1	82.2		5.96	5.97		5.10	5.12		4	
5/12/16	6:10	Cloudy	Middle	3.0	22.80	22.80	22.85	7.84	7.84	7.84	30.67	30.67	30.67	68.2	70.5	69.4	4.91	5.08	4.99	4.23	4.21	4.27	4	4.00
	6:11		Middle	3.0	22.90	22.90		7.84	7.84		30.67	30.67		70.1	68.6		5.02	4.94		4.29	4.36		4	
7/12/16	6:26	Fine	Middle	3.5	20.70	20.70	20.65	8.09	8.09	8.09	28.54	28.54	28.54	68.9	69.2	69.0	5.24	5.25	5.23	3.84	3.89	3.59	4	3.50
	6:27		Middle	3.5	20.60	20.60		8.08	8.08		28.54	28.54		68.8	68.9		5.23	5.20		3.34	3.28		3	
9/12/16	6:35	Fine	Middle	3.5	20.30	20.30	20.25	7.99	7.99	7.99	30.95	30.95	30.95	83.6	84.2	84.3	6.33	6.36	6.37	3.96	3.99	4.08	6	5.50
	6:36		Middle	3.5	20.20	20.20		7.99	7.99		30.95	30.95		84.8	84.4		6.40	6.37		4.14	4.22		5	
12/12/16	10:40	Fine	Middle	3.5	22.30	22.30	22.30	8.31	8.31	8.31	31.05	31.05	31.05	89.2	91.2	91.3	6.48	6.63	6.63	3.95	3.99	4.03	8	8.50
	10:42		Middle	3.5	22.30	22.30		8.31	8.31		31.04	31.04		92.7	92.1		6.73	6.69		4.07	4.09		9	
14/12/16	11:29	Fine	Middle	3.5	22.00	22.00	22.05	8.29	8.29	8.29	30.90	30.90	30.90	92.0	91.3	90.4	6.71	6.66	6.60	4.76	4.77	4.79	4	3.50
	11:31		Middle	3.5	22.10	22.10		8.29	8.29		30.90	30.90		89.6	88.7		6.54	6.47		4.81	4.82		3	
17/12/16	0:53	Fine	Middle	3.5	18.80	18.80	18.70	7.86	7.86	7.88	30.58	30.58	30.58	81.1	80.8	80.9	6.33	6.30	6.31	3.37	3.58	3.62	5	4.50
	0:54		Middle	3.5	18.60	18.60		7.90	7.89		30.58	30.58		80.7	81.0		6.29	6.32		3.83	3.70		4	
19/12/16	6:25	Fine	Middle	3.5	20.20	20.20	20.20	7.97	7.97	7.97	30.68	30.68	30.68	81.9	82.3	81.6	6.20	6.23	6.18	3.06	3.20	3.21	5	5.50
	6:26		Middle	3.5	20.20	20.20		7.97	7.97		30.68	30.68		81.1	81.0		6.14	6.13		3.29	3.30		6	
21/12/16	5:52	Cloudy	Middle	3.0	21.80	21.80	21.80	7.93	7.93	7.95	30.45	30.45	30.46	78.2	79.5	77.3	5.74	5.84	5.66	4.23	4.02	4.01	4	3.50
	5:53		Middle	3.0	21.80	21.80		7.96	7.96		30.46	30.46		76.0	75.4		5.53	5.54		3.98	3.79		3	
23/12/16	0:05	Cloudy	Middle	3.0	19.80	19.80	19.80	7.66	7.66	7.66	30.42	30.42	30.42	81.2	81.5	81.1	6.20	6.22	6.19	4.48	4.45	4.43	6	5.50
	0:06		Middle	3.0	19.80	19.80		7.66	7.66		30.42	30.42		81.4	80.3		6.21	6.13		4.41	4.38		5	
26/12/16	21:02	Cloudy	Middle	3.5	20.10	20.10	20.05	8.16	8.16	8.17	30.82	30.82	30.77	83.4	85.7	84.8	6.83	7.03	6.95	2.85	2.81	2.74	5	5.00
	21:03		Middle	3.5	20.00	20.00		8.17	8.17		30.72	30.72		85.1	85.0		6.97	6.97		2.59	2.72		5	
29/12/16	3:03	Cloudy	Middle	3.0	18.30	18.20	18.23	7.61	7.61	7.62	23.31	23.31	23.31	60.4	60.8	60.5	4.97	5.00	4.98	14.34	14.36	14.33	6	6.00
	3:04		Middle	3.0	18.20	18.20		7.62	7.62		23.31	23.31		60.2	60.5		4.96	4.98		14.32	14.30		6	
31/12/16	3:50	Cloudy	Middle	3.0	18.60	18.60	18.55	7.77	7.77	7.78	30.14	30.14	30.17	82.7	83.0	82.3	6.48	6.50	6.44	4.35	4.28	4.25	5	5.50
	3:51		Middle	3.0	18.50	18.50		7.78	7.78		30.20	30.19		81.0	82.3		6.34	6.45		4.20	4.18		6	

Remarks:  
Single underline denotes exceedance over Action Level.  
Double underline denotes exceedance over Limit Level.

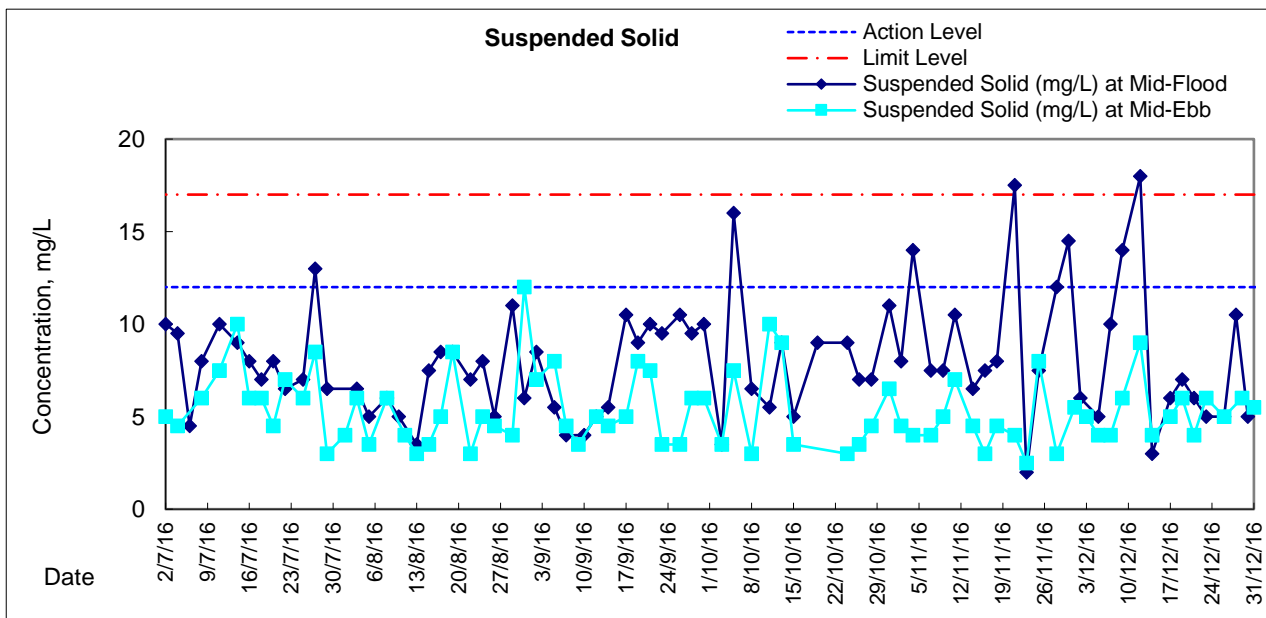
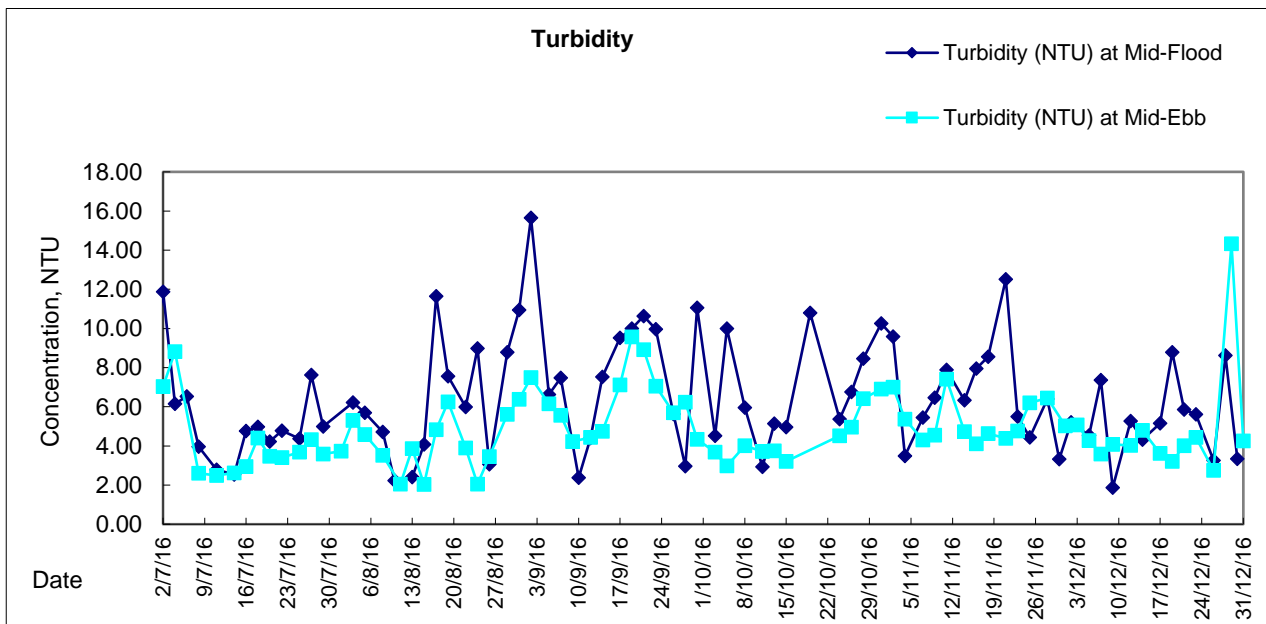
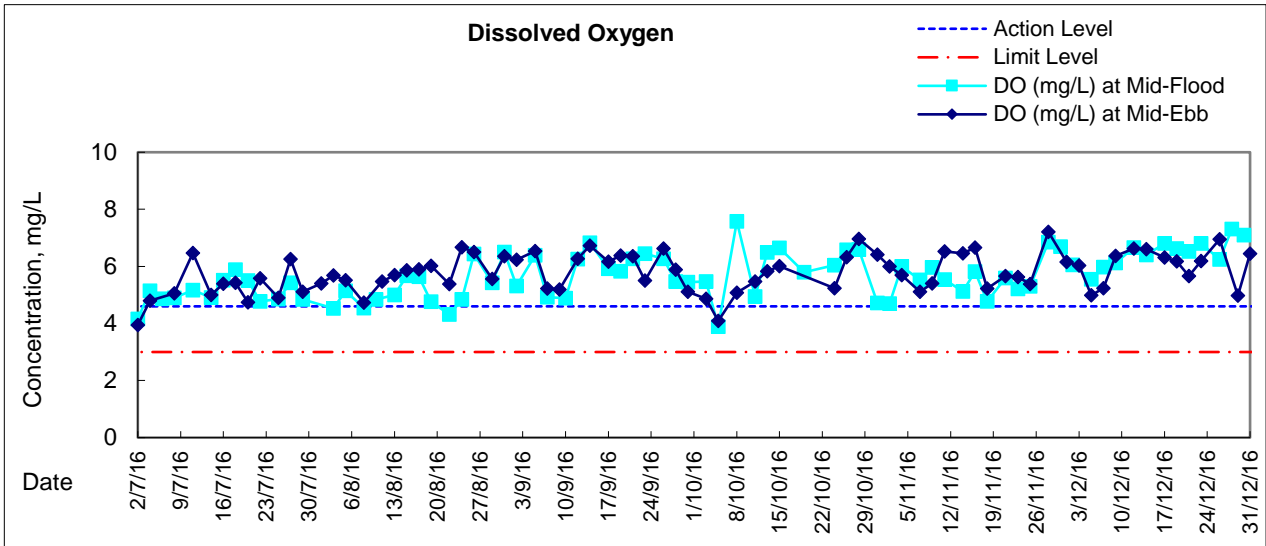


**Water Monitoring Result at Culvert J - Reference Station  
Mid-Ebb Tide**

Date	Time	Weather Condition	Sampling Depth		Water Temperature			pH			Salinity		DO Saturation		DO		Turbidity		Suspended Solids					
					°C		-		ppt		%		mg/L		NTU		mg/L							
					Value	Average	Value	Average	Value	Average	Value	Average	Value	Average	Value	Average	Value	Average	Value	Average				
3/12/16	23:15	Cloudy	Middle	3	22.40	22.40	22.40	8.13	8.13	8.12	29.41	29.41	29.41	70.7	71.1	70.9	5.17	5.21	5.19	7.32	7.30	7.29	2	3.00
	23:16		Middle	3	22.40	22.40		8.10	8.10		29.41	29.41		71.1	70.5		5.20	5.16		7.28	7.26		4	
5/12/16	6:15	Cloudy	Middle	3	22.90	22.90	22.90	7.93	7.93	7.92	27.66	27.66	27.66	60.3	61.1	60.5	4.43	4.48	4.43	7.35	7.30	7.25	7	7.00
	6:16		Middle	3	22.90	22.90		7.91	7.91		27.66	27.66		60.5	60.0		4.43	4.39		7.19	7.16		7	
7/12/16	6:32	Fine	Middle	3	21.10	21.10	21.10	8.05	8.05	8.03	26.42	26.42	26.42	47.8	48.8	48.7	3.65	3.73	3.73	11.22	11.35	10.95	6	7.00
	6:33		Middle	3	21.10	21.10		8.01	8.01		26.42	26.42		49.2	49.1		3.76	3.76		10.57	10.66		8	
9/12/16	6:42	Fine	Middle	3	20.30	20.30	20.25	8.07	8.07	8.05	26.90	26.90	26.90	74.1	74.9	74.4	5.72	5.78	5.74	3.30	3.31	3.30	4	5.00
	6:43		Middle	3	20.20	20.20		8.02	8.02		26.90	26.90		74.6	73.9		5.74	5.71		3.28	3.32		6	
12/12/16	10:35	Fine	Middle	4	22.30	22.30	22.35	8.30	8.30	8.30	30.99	30.99	30.99	91.6	92.5	91.5	6.64	6.79	6.65	3.80	3.79	3.77	5	6.00
	10:37		Middle	4	22.40	22.40		8.30	8.30		30.98	30.98		91.0	90.7		6.59	6.57		3.75	3.74		7	
14/12/16	11:25	Fine	Middle	4	22.20	22.20	22.20	8.19	8.19	8.19	29.21	29.21	29.21	84.5	84.4	83.6	6.20	6.19	6.13	8.43	8.23	8.09	8	7.50
	11:27		Middle	4	22.20	22.20		8.19	8.19		29.21	29.21		83.3	82.1		6.11	6.02		7.90	7.80		7	
17/12/16	1:06	Fine	Middle	4	18.90	18.90	18.90	7.94	7.94	7.94	24.88	24.88	24.88	62.6	64.6	62.8	5.02	5.18	5.04	9.58	9.68	9.73	8	8.00
	1:07		Middle	4	18.90	18.90		7.94	7.94		24.87	24.87		62.9	61.2		5.05	4.91		9.84	9.82		8	
19/12/16	6:31	Fine	Middle	3	20.00	20.00	20.00	7.90	7.90	7.90	26.29	26.29	26.30	42.2	43.0	42.4	3.29	3.35	3.30	7.30	7.28	7.21	12	12.00
	6:32		Middle	3	20.00	20.00		7.89	7.89		26.30	26.30		42.2	42.0		3.29	3.26		7.16	7.10		12	
21/12/16	6:05	Cloudy	Middle	3	21.70	21.70	21.70	7.98	7.98	7.98	27.98	27.98	27.98	64.0	64.8	64.2	4.78	4.84	4.80	3.60	3.62	3.57	4	4.00
	6:06		Middle	3	21.70	21.70		7.97	7.97		27.97	27.98		64.1	63.8		4.79	4.77		3.64	3.41		4	
23/12/16	0:13	Cloudy	Middle	3	19.70	19.70	19.65	7.71	7.71	7.71	28.07	28.07	28.08	47.2	48.0	47.8	3.66	3.72	3.71	5.79	5.85	5.76	8	8.00
	0:14		Middle	3	19.60	19.60		7.70	7.70		28.08	28.08		48.2	47.9		3.74	3.71		5.73	5.66		8	
26/12/16	21:11	Cloudy	Middle	3	20.50	20.50	20.50	8.22	8.22	8.22	26.24	26.24	26.24	72.6	74.1	74.0	6.17	6.29	6.29	4.68	4.66	4.45	7	6.00
	21:12		Middle	3	20.50	20.50		8.21	8.22		26.24	26.24		74.9	74.5		6.37	6.33		4.28	4.18		5	
29/12/16	3:10	Cloudy	Middle	3	19.30	19.30	19.30	7.62	7.62	7.62	25.77	25.77	25.77	53.5	54.5	54.1	4.28	4.34	4.32	14.42	14.37	14.38	14	14.50
	3:11		Middle	3	19.30	19.30		7.62	7.62		25.77	25.77		54.4	54.1		4.33	4.31		14.37	14.34		15	
31/12/16	3:54	Cloudy	Middle	3	18.90	18.90	18.90	7.98	7.97	7.96	26.20	26.20	26.20	48.0	48.4	48.2	3.83	3.85	3.84	10.17	10.22	10.29	7	8.50
	3:55		Middle	3	18.90	18.90		7.95	7.95		26.20	26.20		48.3	48.2		3.85	3.84		10.34	10.43		10	



### Graphic Presentation of Water Quality Result of M5B - Central Cooling Water Intake Groups





### Graphic Presentation of Water Quality Result of Culvert J - Reference Station

